



choose
dupage

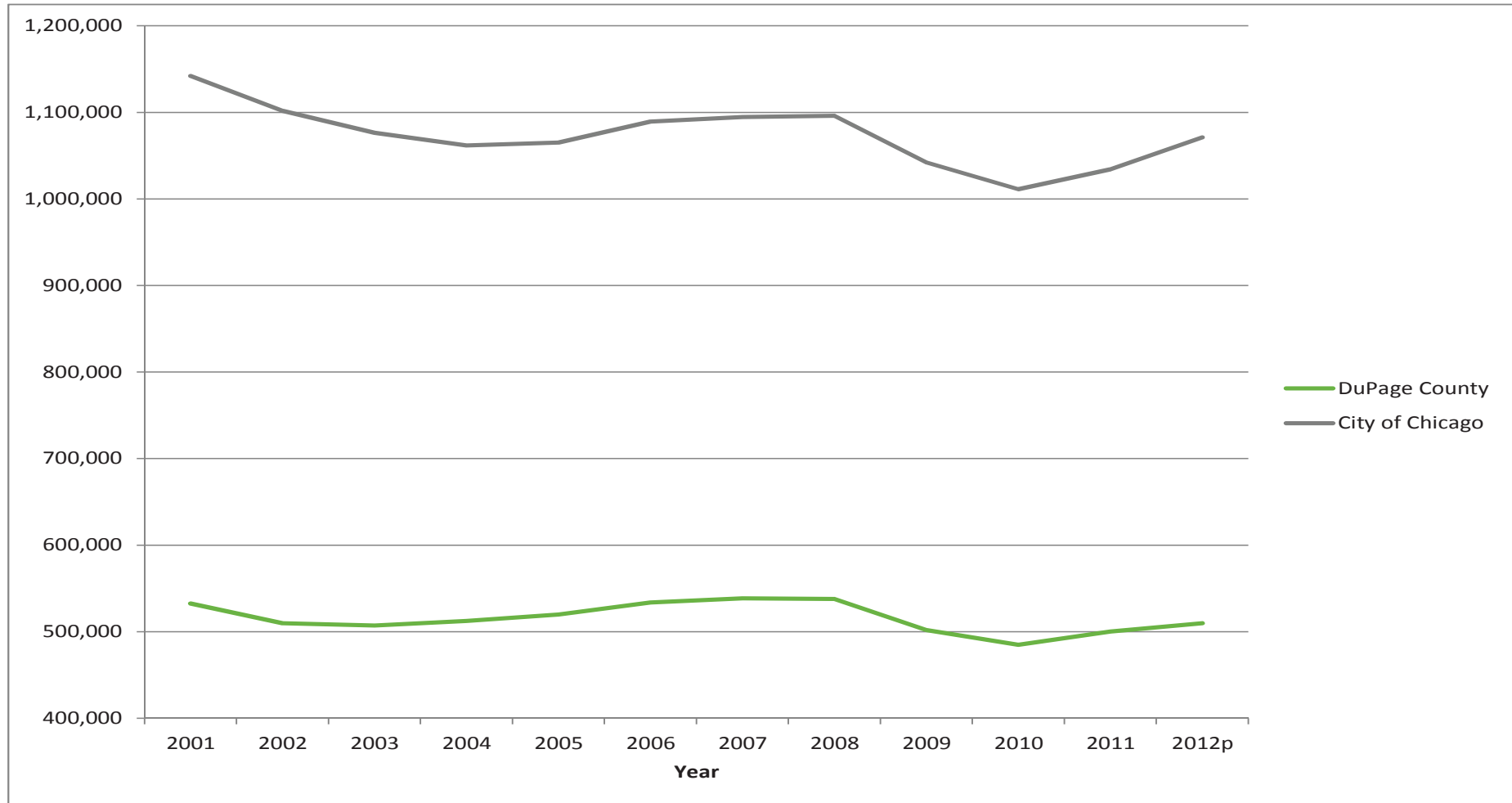
Economic Development AllianceSM

www.choosedupage.com

ECONOMIC TREND ANALYSIS

City of Chicago | DuPage County

Private Sector Employment (Number of Jobs) City of Chicago and DuPage County



Private Sector Employment (Number of Jobs) City of Chicago and DuPage County

Private Sector Employment				
Year	City of Chicago	DuPage County	City of Chicago % difference	DuPage County % difference
2001	1,141,970	532,523		
2002	1,101,827	509,741	-3.52%	-4.28%
2003	1,076,483	507,264	-2.30%	-0.49%
2004	1,061,748	512,453	-1.37%	1.02%
2005	1,065,215	519,841	0.33%	1.44%
2006	1,089,347	533,701	2.27%	2.67%
2007	1,094,718	538,626	0.49%	0.92%
2008	1,096,131	537,781	0.13%	-0.16%
2009	1,042,013	501,878	-4.94%	-6.68%
2010	1,011,151	484,910	-2.96%	-3.38%
2011	1,034,196	500,128	2.28%	3.14%
2012p	1,071,227	509,888	3.58%	1.95%
Total	-70,743.00	-22,635	-6.19%	-4.25%

Source: Illinois Department of Employment Securities, Where Workers Work

p=preliminary data

Summary

- Employment numbers have trended down for both Chicago and DuPage County for period of 2001-2012.
- Chicago employment numbers have decreased at a greater rate than DuPage County.
- Employment numbers for both Chicago and DuPage County have increased since 2010.

Unemployment Rate Comparison City of Chicago and DuPage County



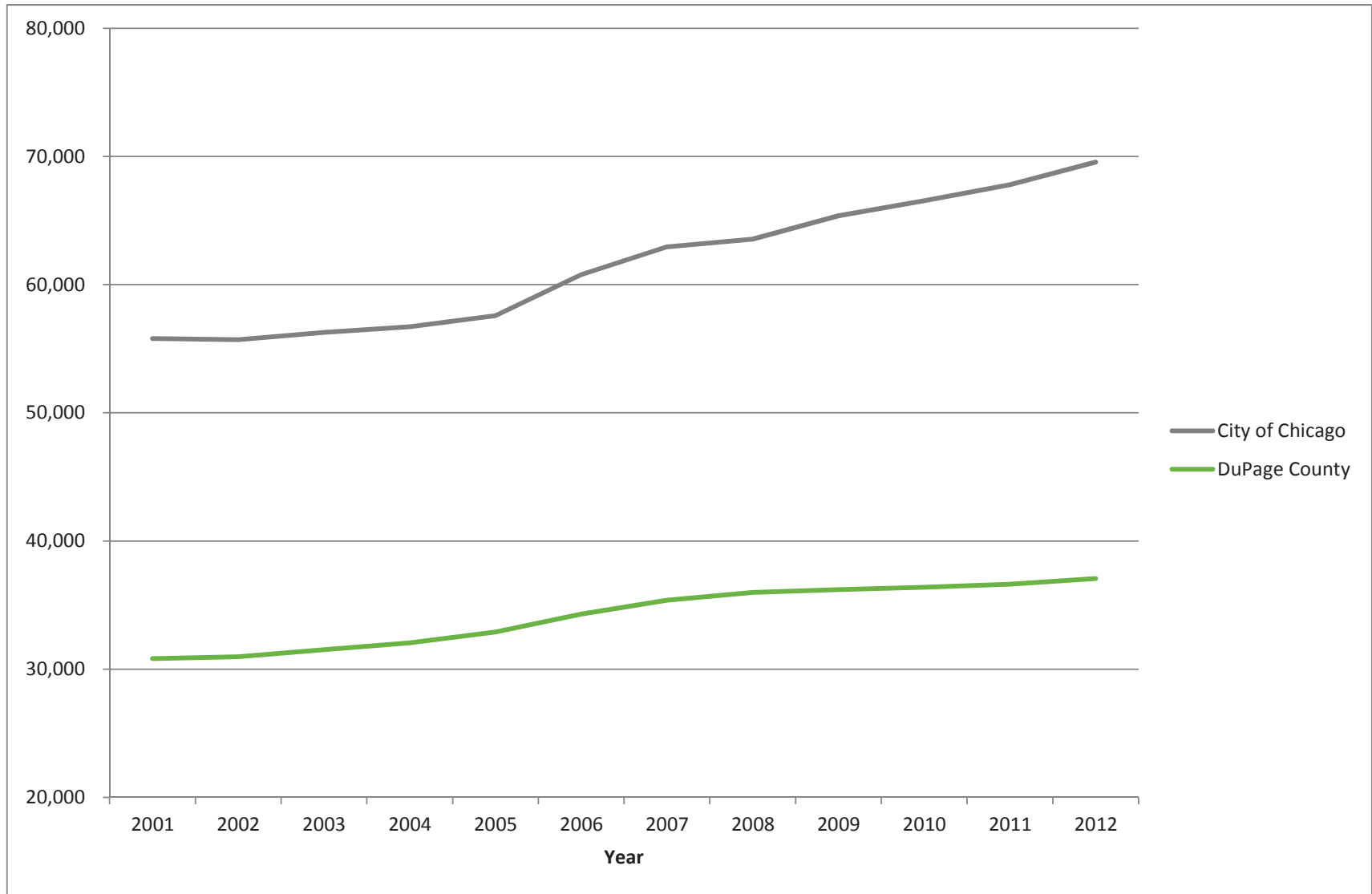
Unemployment Rate Comparison City of Chicago and DuPage County

Unemployment Rate		
Year	City of Chicago	DuPage County
2001	6.8%	4.4%
2002	8.3%	5.5%
2003	8.1%	5.5%
2004	7.5%	5.0%
2005	7.1%	4.7%
2006	5.3%	3.4%
2007	5.7%	3.8%
2008	6.9%	5.0%
2009	10.9%	8.4%
2010	11.7%	8.5%
2011	11.3%	8.0%
2012	9.7%	6.9%

Summary

- Unemployment rates have increased for Chicago, DuPage County since 2001.
- The DuPage County unemployment rate is 28% lower than Chicago.
- Unemployment levels peaked in 2010 and have been reducing since for all areas.
- **DuPage County has lowest county-wide unemployment rate in Northeastern Illinois.**

Covered Establishments – Private companies reporting employees to I.D.E.S. City of Chicago and DuPage County



Covered Establishments – Private companies reporting employees to I.D.E.S. City of Chicago and DuPage County

Number of Covered Establishments				
Year	City of Chicago	DuPage County	Chicago % change	DuPage County % change
2001	55,802	30,829		
2002	55,699	30,971	-0.18%	0.46%
2003	56,270	31,531	1.03%	1.81%
2004	56,707	32,065	0.78%	1.69%
2005	57,579	32,906	1.54%	2.62%
2006	60,779	34,293	5.56%	4.22%
2007	62,948	35,388	3.57%	3.19%
2008	63,543	35,990	0.95%	1.70%
2009	65,370	36,218	2.88%	0.63%
2010	66,538	36,400	1.79%	0.50%
2011	67,788	36,631	1.88%	0.63%
2012	69,556	37,075	2.61%	1.21%
Total	13,754	6,246	24.65%	20.26%

Source: Illinois Department of Employment Securities, Where Workers Work

Summary

- The number of new establishment has increased for Chicago and DuPage County since 2001.
- Chicago saw an increase of 25% in new establishments since 2001.
- DuPage County saw an increase of 20% in new establishments since 2001.

Industrial Vacancy Rates – Manufacturing and Warehouse spaces City of Chicago and DuPage County



Industrial Vacancy Rates – Manufacturing and Warehouse spaces City of Chicago and DuPage County

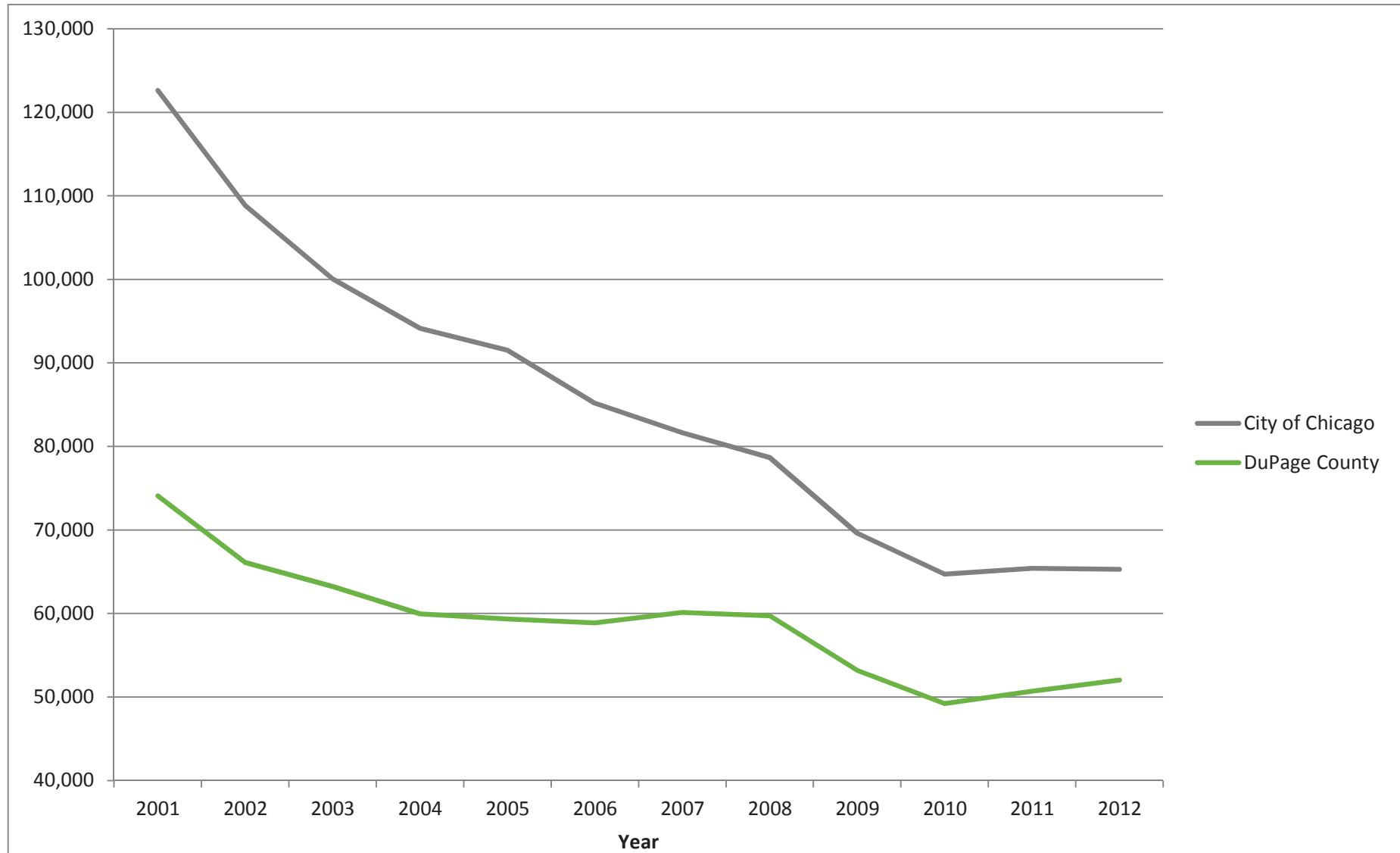
Industrial Space		
	City of Chicago	DuPage County
2001	6.9%	8.7%
2002	8.2%	10.2%
2003	9.7%	10.4%
2004	9.9%	9.6%
2005	9.9%	9.7%
2006	9.0%	9.4%
2007	9.0%	9.4%
2008	7.8%	9.8%
2009	8.8%	11.5%
2010	10.1%	12.9%
2011	10.4%	11.6%
2012	10.2%	9.2%
2013 YTD	9.9%	8.6%

Source: CoStar

Summary

- The DuPage County vacancy rate has returned to 2001 levels.
- The DuPage County vacancy rate is less than the Chicago.
- The manufacturing sector is growing in DuPage County.
- The DuPage County tax rate and cost of doing business are driving factors in lower vacancy rates.
- The Chicago industrial vacancy rate is higher than 2001 levels.

Manufacturing Sector Employment City of Chicago and DuPage County



Manufacturing Sector Employment City of Chicago and DuPage County

Manufacturing				
Year	City of Chicago	DuPage County	City of Chicago % difference	DuPage County % difference
2001	122,623	74,079		
2002	108,859	66,092	-11.22%	-10.78%
2003	100,062	63,227	-8.08%	-4.33%
2004	94,142	59,963	-5.92%	-5.16%
2005	91,517	59,346	-2.79%	-1.03%
2006	85,183	58,878	-6.92%	-0.79%
2007	81,624	60,122	-4.18%	2.11%
2008	78,670	59,719	-3.62%	-0.67%
2009	69,620	53,193	-11.50%	-10.93%
2010	64,727	49,208	-7.03%	-7.49%
2011	65,421	50,700	1.07%	3.03%
2012p	65,304	52,024	-0.18%	2.61%
Total	-57,319	-22,055	-46.74%	-29.77%

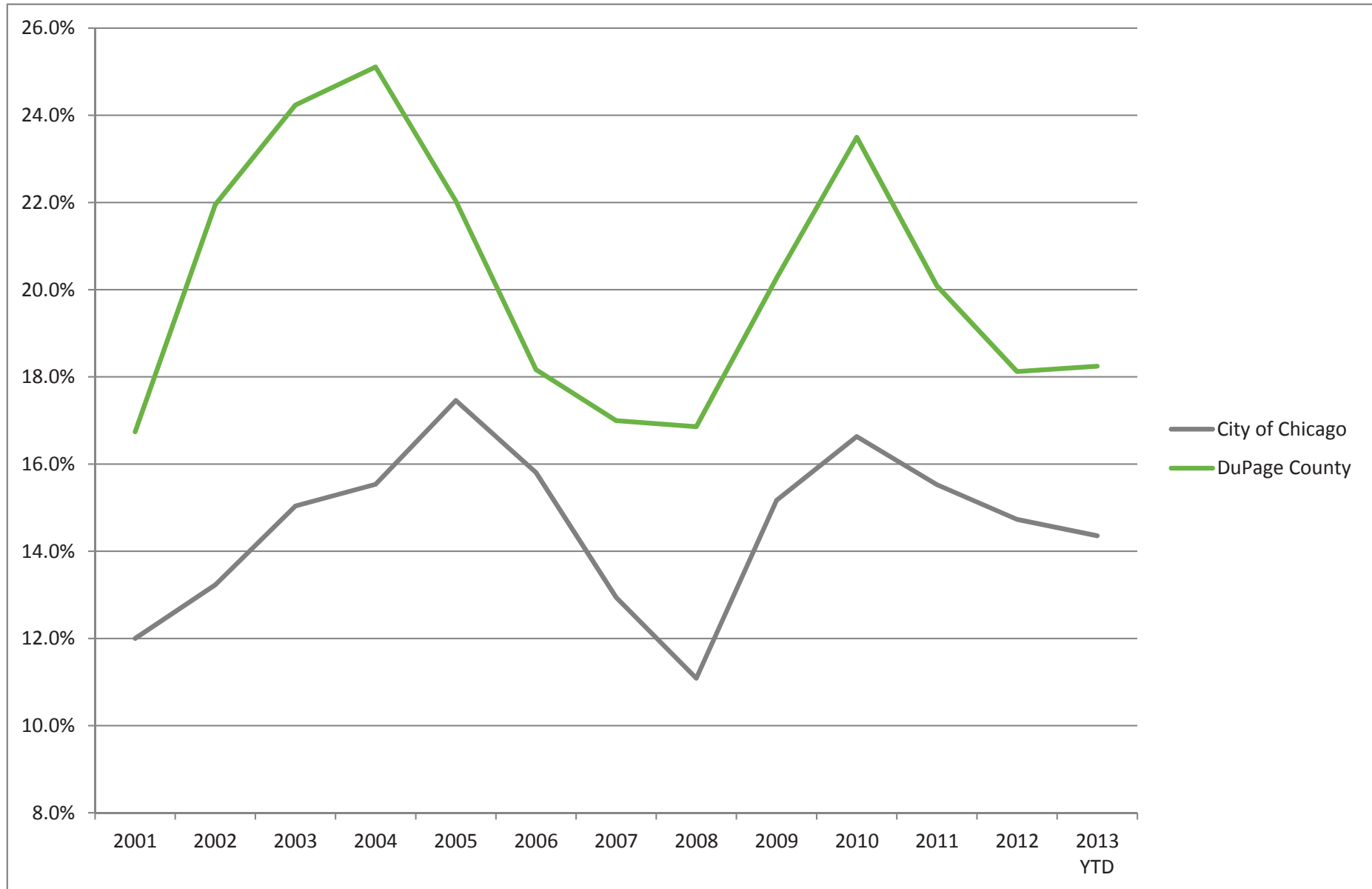
Source: Illinois Department of Employment Securities, Where Workers Work

p=preliminary data

Summary

- The manufacturing sector is growing in DuPage County.
- The Chicago manufacturing sector has seen decrease of 47%.
- The DuPage County has seen decrease of 30%
- DuPage County has seen increase in the sector from 2010-2012.
- Chicago continues to see employment losses in sector.

Class A Office Space Vacancy Rate Comparison City of Chicago and DuPage County



Class A Vacancy Rates – Premiere Office Space City of Chicago and DuPage County

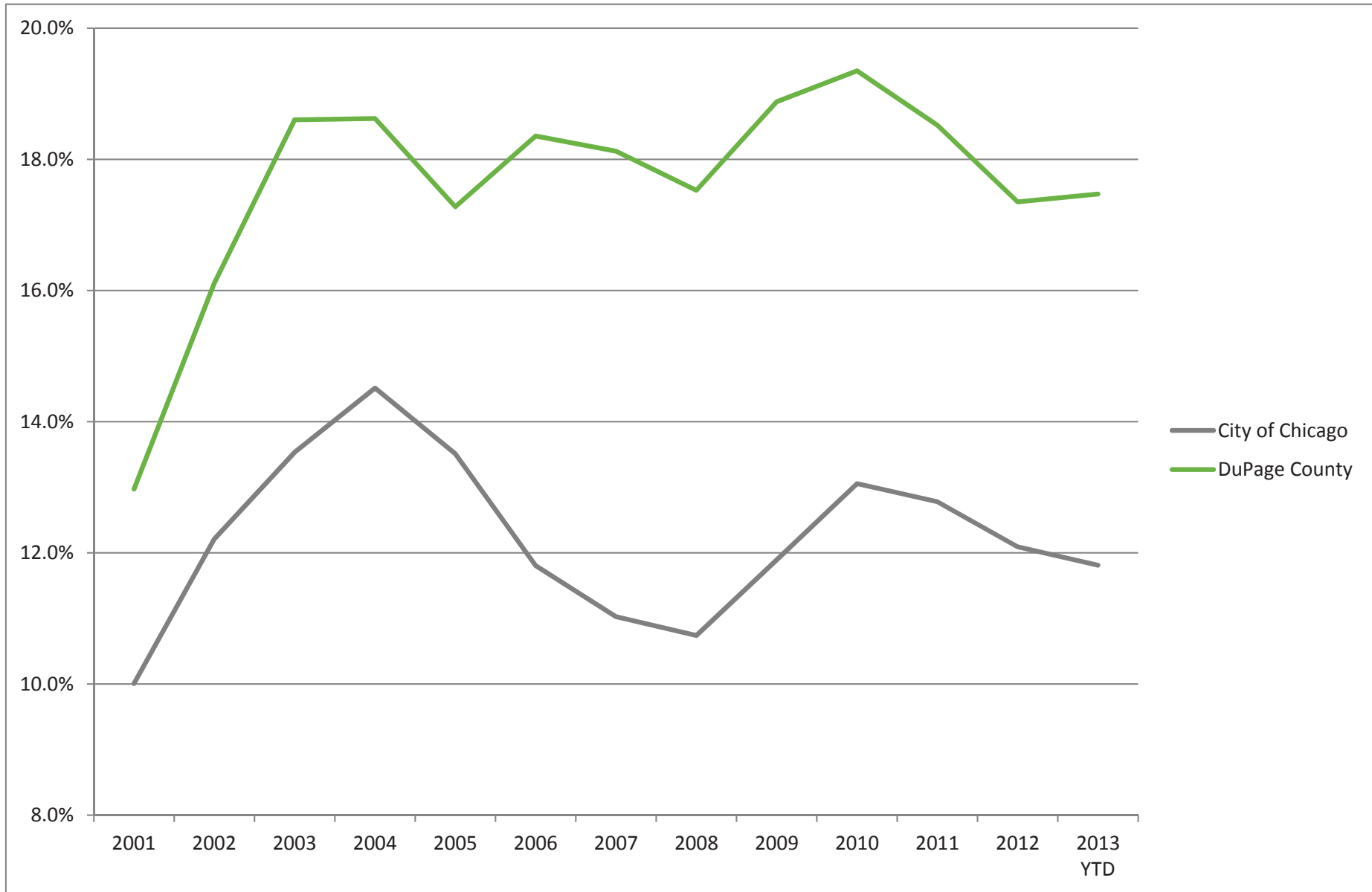
Class A Office Space		
	City of Chicago	DuPage County
2001	12.0%	16.7%
2002	13.2%	22.0%
2003	15.0%	24.2%
2004	15.5%	25.1%
2005	17.5%	22.0%
2006	15.8%	18.2%
2007	12.9%	17.0%
2008	11.1%	16.9%
2009	15.2%	20.3%
2010	16.6%	23.5%
2011	15.5%	20.1%
2012	14.7%	18.1%
2013 YTD	14.4%	18.2%

Source: CoStar

Summary

- Chicago and DuPage County Class A vacancy rates both increased for period of 2001-2012.
- DuPage County had lowest increase in Class A vacancy rate for period 2001-2012.
- Chicago vacancy rate increased 20%.
- DuPage County vacancy rate increased 9%.
- Chicago and DuPage County saw peak vacancy rates in 2010 and are trending downward.
- Several factors may influence vacancy rate – tenant upgrades, pricing, product availability, and new product/buildings on market.

Class B Office Space Vacancy Rate City of Chicago and DuPage County



Class B Office Space Vacancy Rate City of Chicago and DuPage County

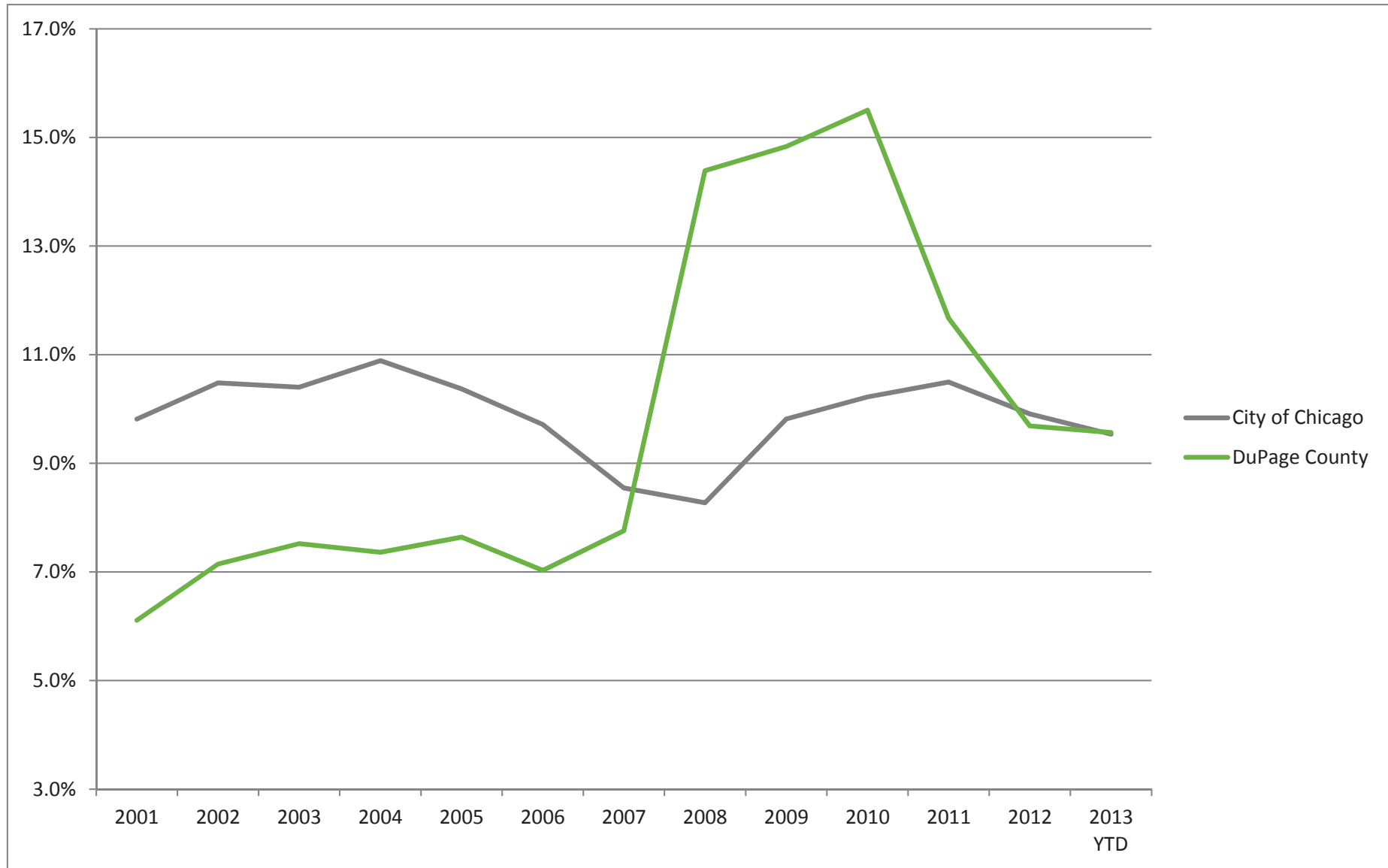
Class B Office Space		
	City of Chicago	DuPage County
2001	10.0%	13.0%
2002	12.2%	16.1%
2003	13.5%	18.6%
2004	14.5%	18.6%
2005	13.5%	17.3%
2006	11.8%	18.4%
2007	11.0%	18.1%
2008	10.7%	17.5%
2009	11.9%	18.9%
2010	13.1%	19.3%
2011	12.8%	18.5%
2012	12.1%	17.4%
2013 YTD	11.8%	17.5%

Source: CoStar

Summary

- Chicago and DuPage County Class B vacancy rates increased for period of 2001-2012.
- Chicago had lowest increase in Class B vacancy rate for period 2001-2012.
- Chicago vacancy rate increased 1%.
- DuPage County vacancy rate increased 35%.
- Chicago and DuPage County saw peak vacancy rates in 2010 and are trending downward.
- Several factors may influence vacancy rate – tenant upgrades, pricing, product availability, and new product/buildings on market.

Class C Office Space Vacancy Rate City of Chicago and DuPage County



Class C Office Space Vacancy Rate City of Chicago and DuPage County

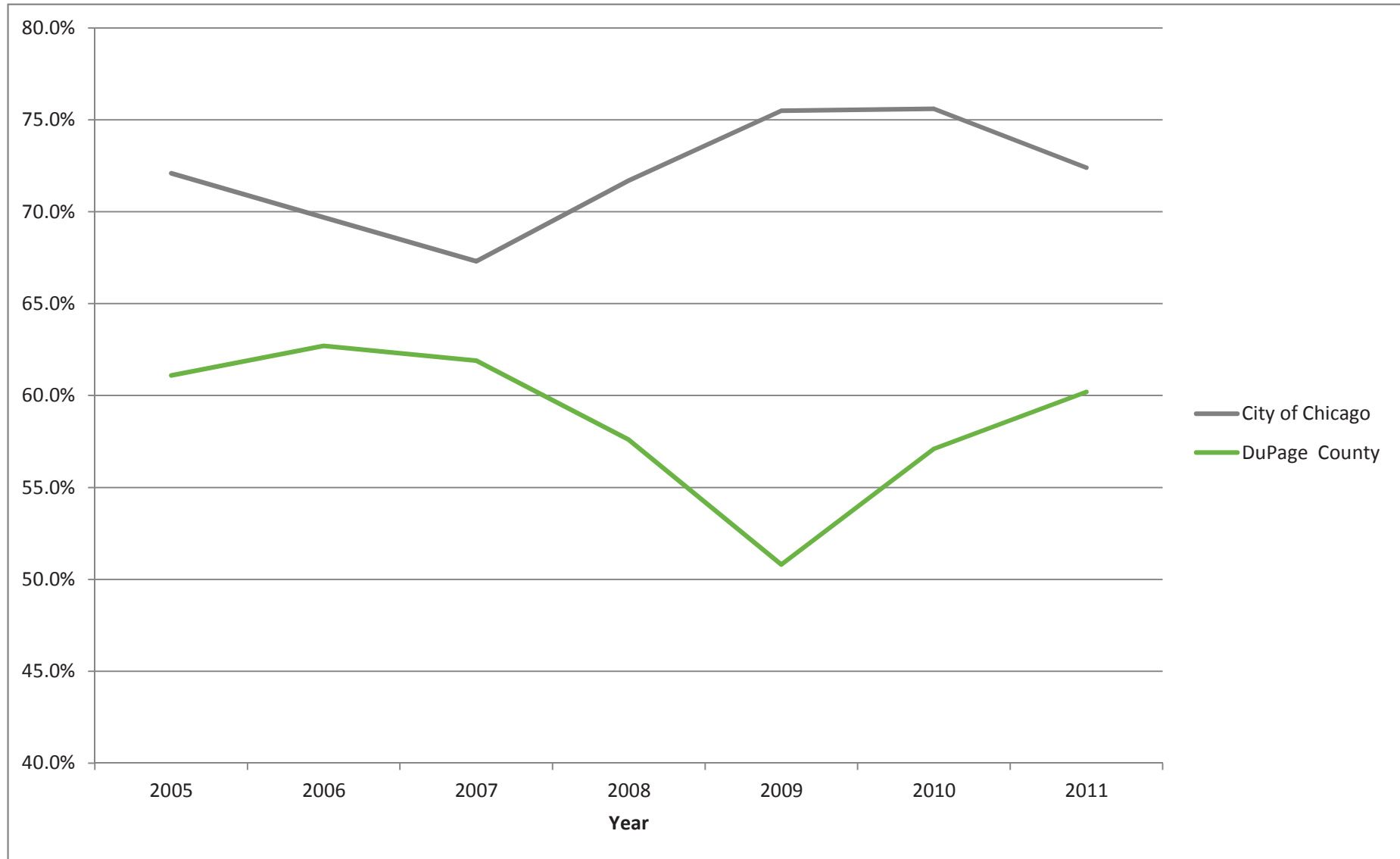
Class C Office Space		
	City of Chicago	DuPage County
2001	9.8%	6.1%
2002	10.5%	7.1%
2003	10.4%	7.5%
2004	10.9%	7.4%
2005	10.4%	7.6%
2006	9.7%	7.0%
2007	8.5%	7.8%
2008	8.3%	14.4%
2009	9.8%	14.8%
2010	10.2%	15.5%
2011	10.5%	11.7%
2012	9.9%	9.7%
2013 YTD	9.5%	9.6%

Source: CoStar

Summary

- Chicago Class C vacancy rate decreased for period of 2001-2012
- DuPage County Class C vacancy rates increased for period of 2001-2012.
- Chicago vacancy rate decreased 1%.
- DuPage County vacancy rate increased 57%.
- DuPage County saw peak vacancy rates in 2010 and are trending downward.
- Several factors may influence vacancy rate – tenant upgrades, pricing, product availability, and new product/buildings on market.

Hotel Occupancy Rate Comparison City of Chicago and DuPage County



Hotel Occupancy Rate Comparison City of Chicago and DuPage County

Hotel Occupancy Rates

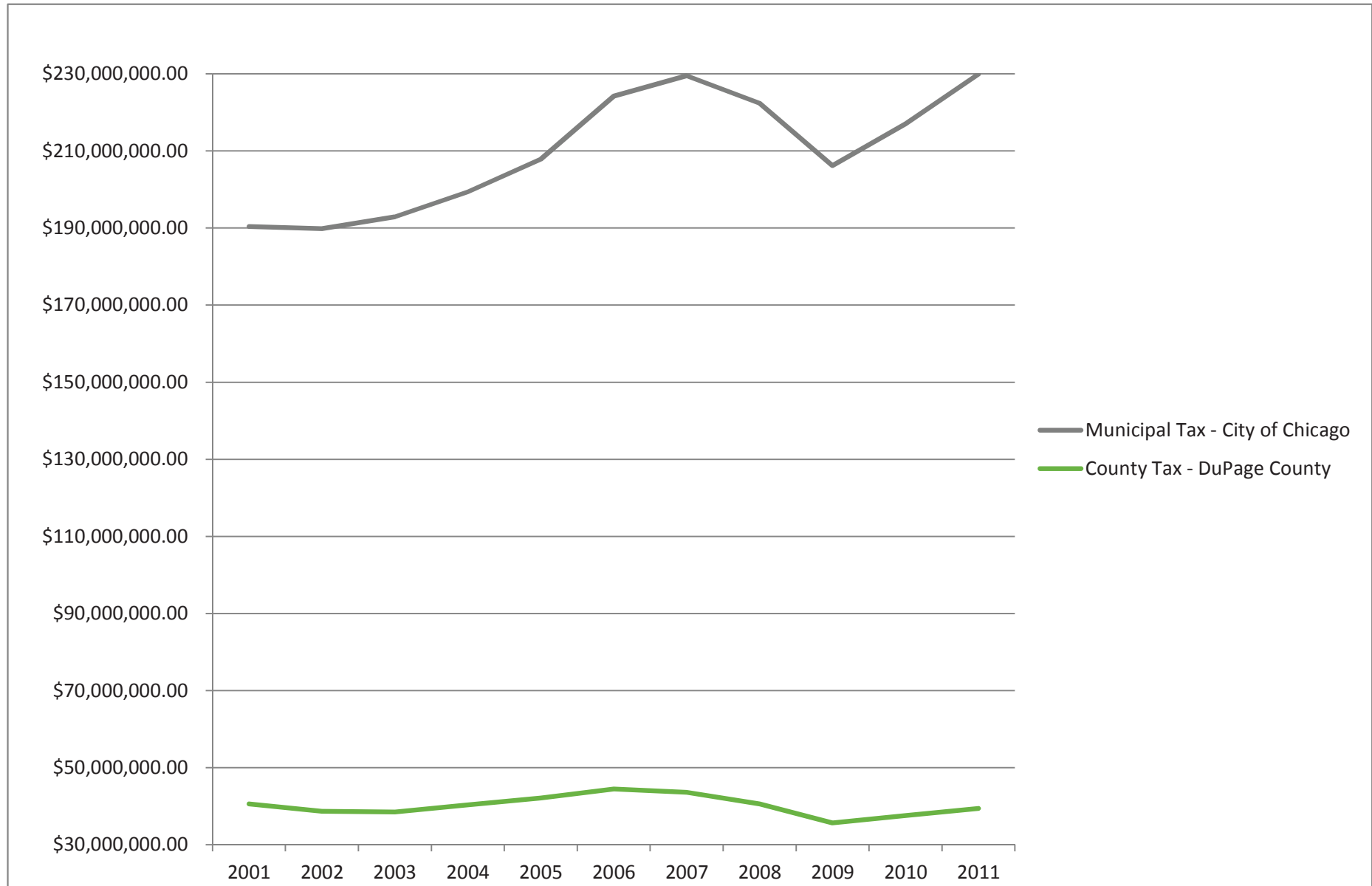
Year	City of Chicago	DuPage County
2005	72.1%	61.1%
2006	69.7%	62.7%
2007	67.3%	61.9%
2008	71.7%	57.6%
2009	75.5%	50.8%
2010	75.6%	57.1%
2011	72.4%	60.2%

Source: Choose Chicago and DuPage Convention & Visitors Bureau
2012 data is unavailable.

Summary

- Both Chicago and DuPage County occupancy rates have returned to 2005 levels.
- Chicago occupancy rates returned to 2005 levels sooner than DuPage County.
- Chicago occupancy rates down for 2011 vs. 2010. It is too soon to tell if this is a trend and may be due to new hotel product on the market in Chicago.
- DuPage County hotel occupancy rates were up for 2010 vs. 2011.

Sales Tax Receipts Comparison City of Chicago and DuPage County



Sales Tax Receipts Comparison City of Chicago and DuPage County

City of Chicago and DuPage County - Sales Tax Receipts

Year	Municipal Tax - City of Chicago	County Tax - DuPage County	Chicago % change	DuPage County % change
2001	\$ 190,364,616.12	\$ 40,565,102.72		
2002	\$ 189,822,523.28	\$ 38,637,334.80	-0.28%	-4.75%
2003	\$ 192,905,773.67	\$ 38,475,195.17	1.62%	-0.42%
2004	\$ 199,369,621.95	\$ 40,304,289.70	3.35%	4.75%
2005	\$ 207,837,887.19	\$ 42,112,650.82	4.25%	4.49%
2006	\$ 224,254,977.19	\$ 44,429,730.30	7.90%	5.50%
2007	\$ 229,541,013.15	\$ 43,594,328.62	2.36%	-1.88%
2008	\$ 222,372,077.88	\$ 40,591,730.75	-3.12%	-6.89%
2009	\$ 206,212,377.56	\$ 35,671,604.61	-7.27%	-12.12%
2010	\$ 217,035,524.94	\$ 37,582,715.03	5.25%	5.36%
2011	\$ 229,955,105.75	\$ 39,411,043.28	5.95%	4.86%
Total	\$ 39,590,489.63	\$ 1,154,059.44	20.80%	-2.84%

Source: Illinois Department of Revenue

Data for DuPage County is the county sales tax and countywide sales tax (CT and CST).

Data for Chicago includes both Cook and DuPage Counties.

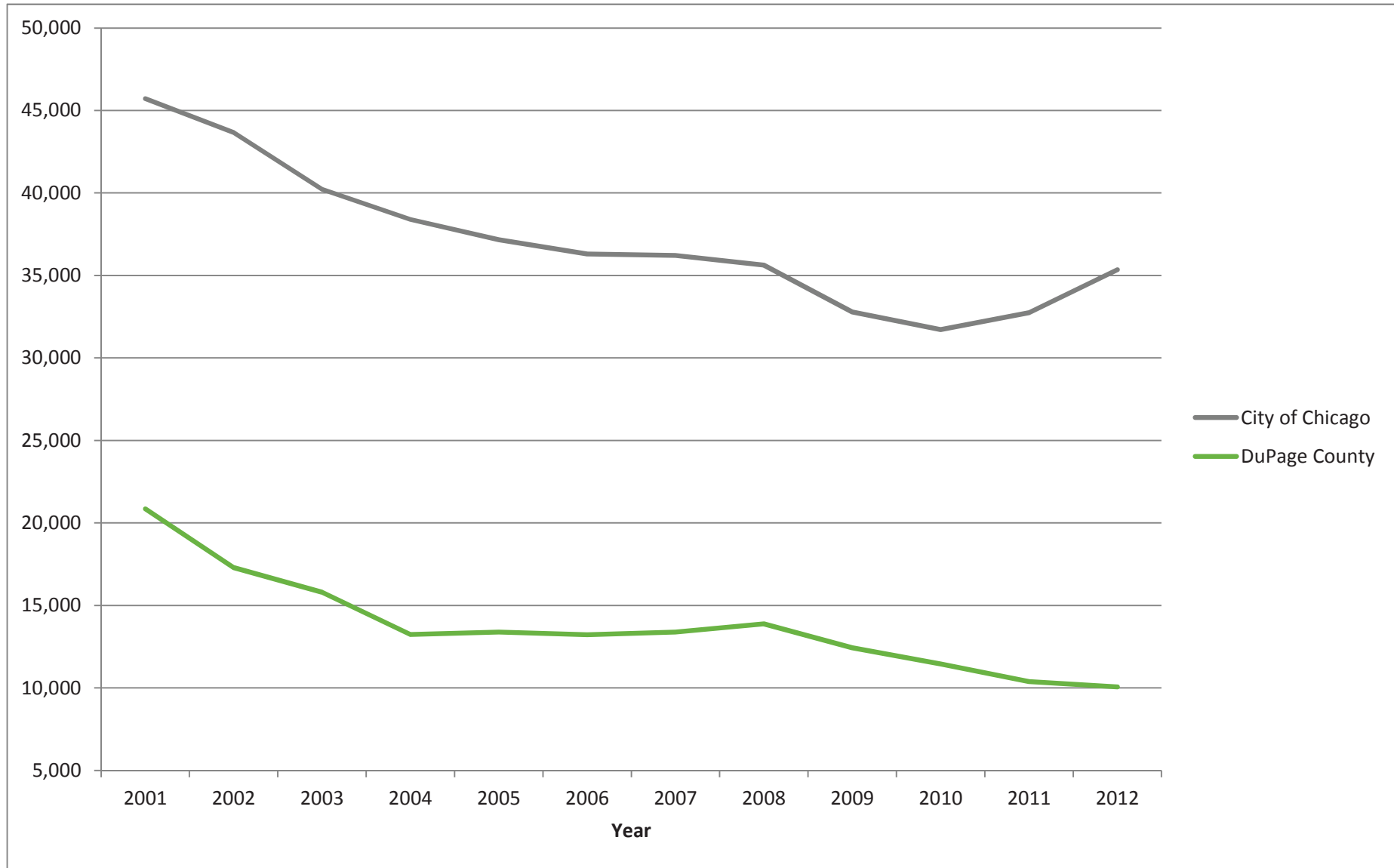
Data for Chicago is the municipal sales tax (MT).

In 2006 the Chicago home rule municipal sales tax increased .25% from the prior year.

Summary

- Calendar year 2012 data not yet available.
- Data for DuPage County is the county sales tax and countywide sales tax (CT and CST).
- Data for Chicago includes both Cook and DuPage Counties (O'Hare Airport portion).
- Data for Chicago is the municipal sales tax (MT).
- In 2006 the Chicago home rule municipal sales tax increased .25% from the prior year – roughly \$1,000,000 annually.
- Chicago sales tax revenue increased from 2001-2011.
- DuPage County sales tax revenue was flat from 2001-2011.

Information Technology Sector Employment City of Chicago and DuPage County



Information Technology Sector Employment City of Chicago and DuPage County

Information Technology				
Year	City of Chicago	DuPage County	City of Chicago % difference	DuPage County % difference
2001	45,713	20,851		
2002	43,661	17,290	-4.49%	-17.08%
2003	40,224	15,797	-7.87%	-8.64%
2004	38,393	13,237	-4.55%	-16.21%
2005	37,171	13,387	-3.18%	1.13%
2006	36,302	13,226	-2.34%	-1.20%
2007	36,217	13,377	-0.23%	1.14%
2008	35,625	13,888	-1.63%	3.82%
2009	32,780	12,435	-7.99%	-10.46%
2010	31,714	11,448	-3.25%	-7.94%
2011	32,749	10,386	3.26%	-9.28%
2012p	35,344	10,064	7.92%	-3.10%
Total	-10,369	-10,787	-22.68%	-51.73%

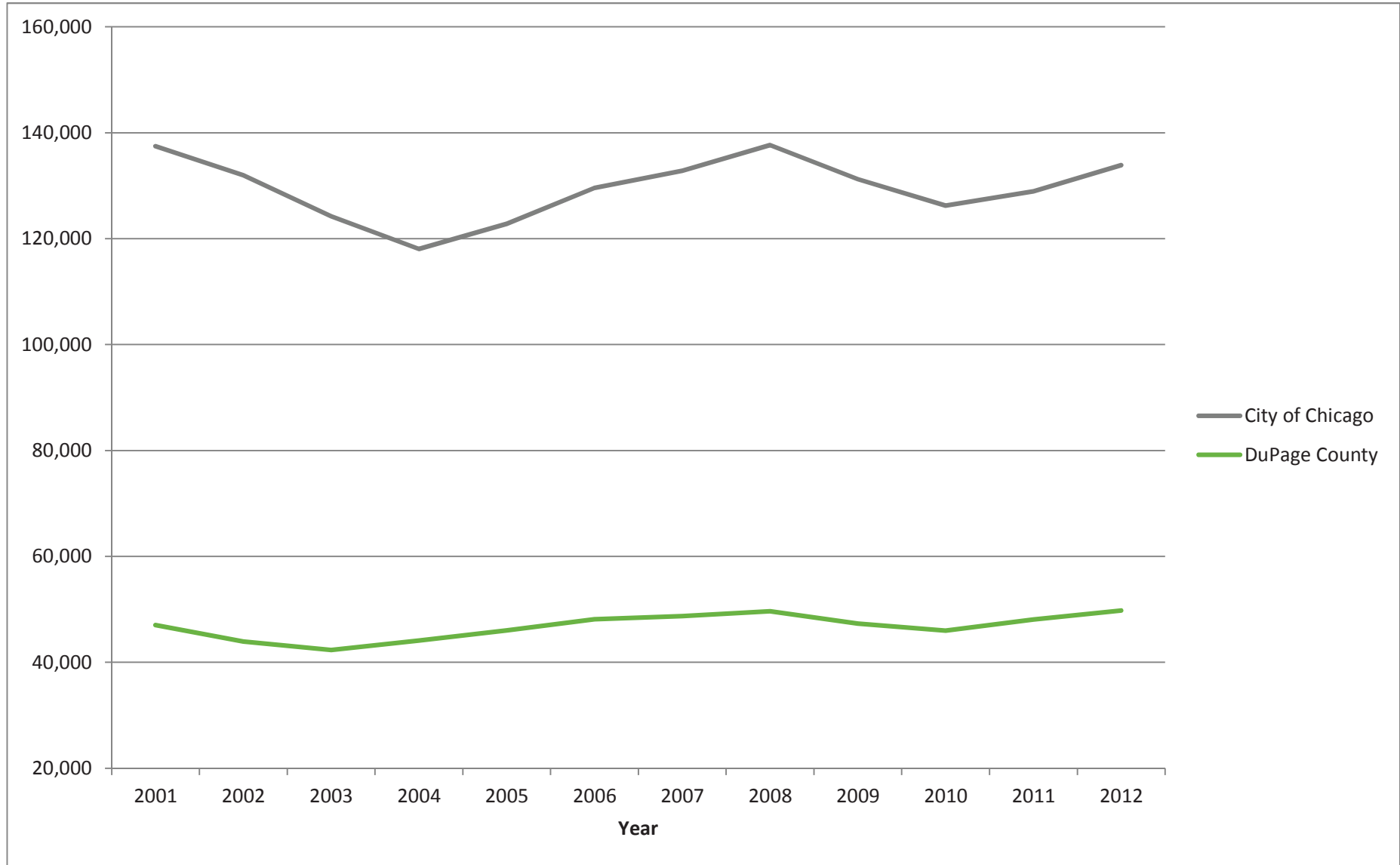
Source: Illinois Department of Employment Securities, Where Workers Work

p=preliminary data

Summary

- Both Chicago and DuPage County saw a reduction of approximately 10,000 jobs in the IT sector since 2001.
- Chicago has a larger IT base than DuPage County.
- The Chicago IT sector trend is positive since 2010.
- DuPage County is still trending down although the trend has flattened.
- Chicago has positioned itself well for IT growth.

Professional, Scientific & Technical Services Employment City of Chicago and DuPage County



Professional, Scientific & Technical Services Employment City of Chicago and DuPage County

Professional, Scientific & Technical Services

Year	City of Chicago	DuPage County	City of Chicago % difference	DuPage County % difference
2001	137,426	47,039		
2002	131,967	43,936	-3.97%	-6.60%
2003	124,213	42,334	-5.88%	-3.65%
2004	118,075	44,113	-4.94%	4.20%
2005	122,792	46,049	3.99%	4.39%
2006	129,580	48,134	5.53%	4.53%
2007	132,840	48,733	2.52%	1.24%
2008	137,670	49,625	3.64%	1.83%
2009	131,240	47,331	-4.67%	-4.62%
2010	126,250	46,010	-3.80%	-2.79%
2011	128,933	48,098	2.13%	4.54%
2012p	133,890	49,798	3.84%	3.53%
Total	-3,536	2,759	-2.57%	5.87%

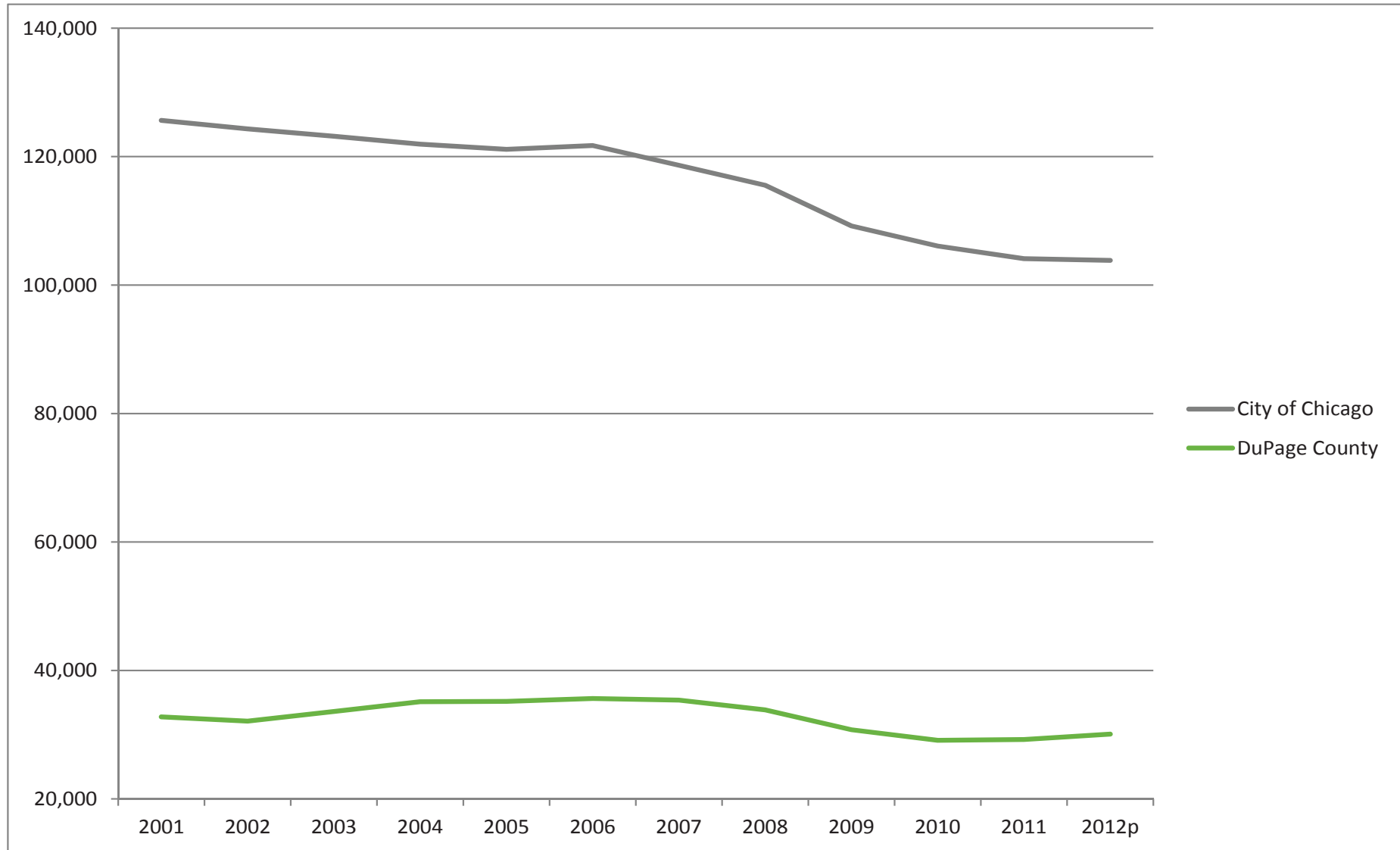
Source: Illinois Department of Employment Securities, Where Workers Work

p=preliminary data

Summary

- Chicago has seen decrease of 2.6% in this sector since 2001.
- DuPage County has seen growth in this sector of 5.9%.
- Trend line is flat for Chicago.
- Trend line is slightly positive for DuPage County.

Finance and Insurance Sector Employment City of Chicago and DuPage County



Finance and Insurance Sector Employment City of Chicago and DuPage County

Finance and Insurance				
Year	City of Chicago	DuPage County	City of Chicago % difference	DuPage County % difference
2001	125,642	32,779		
2002	124,317	32,105	-1.05%	-2.06%
2003	123,171	33,611	-0.92%	4.69%
2004	121,943	35,130	-1.00%	4.52%
2005	121,128	35,188	-0.67%	0.17%
2006	121,724	35,630	0.49%	1.26%
2007	118,652	35,386	-2.52%	-0.68%
2008	115,536	33,869	-2.63%	-4.29%
2009	109,212	30,778	-5.47%	-9.13%
2010	106,072	29,121	-2.88%	-5.38%
2011	104,117	29,247	-1.84%	0.43%
2012p	103,843	30,089	-0.26%	2.88%
Total	-21,799	-2,690	-17.35%	-8.21%

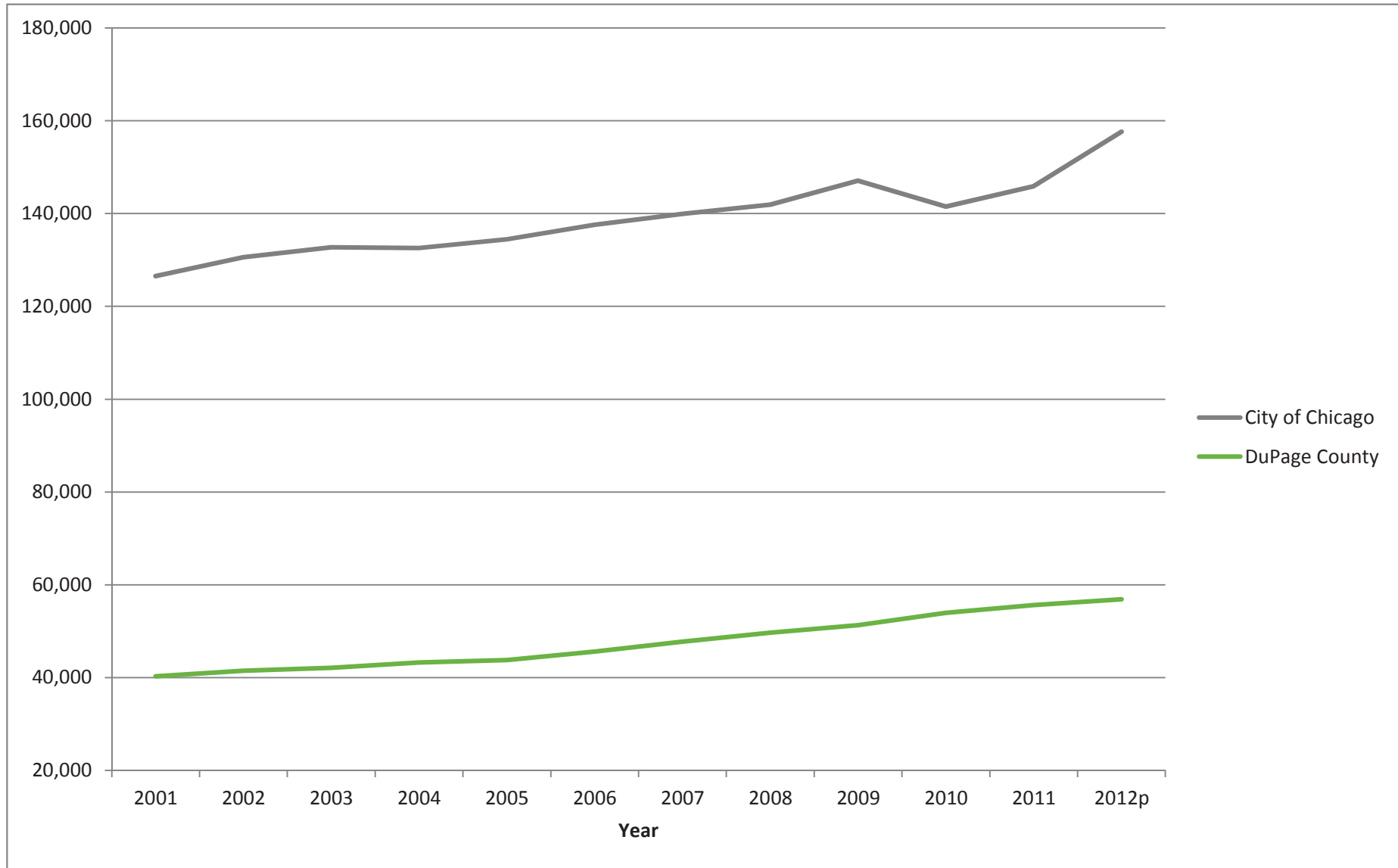
Source: Illinois Department of Employment Securities, Where Workers Work

p=preliminary data

Summary

- Chicago has seen significant losses in the sector since 2001.
- DuPage County has little change in the sector since 2001.
- The DuPage County trend is positive since 2010.
- DuPage is well positioned for growth in this sector.

Healthcare & Social Assistance Employment City of Chicago and DuPage County



Healthcare & Social Assistance Employment City of Chicago and DuPage County

Health Care & Social Assistance

Year	City of Chicago	DuPage County	City of Chicago % difference	DuPage County % difference
2001	126,500	40,258		
2002	130,592	41,467	3.23%	3.00%
2003	132,746	42,108	1.65%	1.55%
2004	132,577	43,248	-0.13%	2.71%
2005	134,441	43,755	1.41%	1.17%
2006	137,586	45,623	2.34%	4.27%
2007	139,922	47,744	1.70%	4.65%
2008	141,926	49,664	1.43%	4.02%
2009	147,095	51,314	3.64%	3.32%
2010	141,478	53,938	-3.82%	5.11%
2011	145,889	55,629	3.12%	3.14%
2012p	157,635	56,903	8.05%	2.29%
Total	31,135	16,645	24.61%	41.35%

Source: Illinois Department of Employment Securities, Where Workers Work

p=preliminary data

Summary

- Both Chicago and DuPage County have seen dramatic increases in this sector.
- DuPage County growth has outpaced Chicago.
- The trend line is positive for both Chicago and DuPage County.

Private Sector Employment DuPage County

Private Sector Employment	2012	2011	2010	2009	2008	2007	2006	2005	2004	2003	2002	2001
Industry (NAICS)	DuPage County											
ALL INDUSTRIES	509,888	500,128	484,910	501,878	537,781	538,626	533,701	519,841	512,453	507,264	509,741	532,523
AGRICULTURE, FORESTRY, FISHING, & HUNTING (11)	342	243	280	310	338	353	328	365	333	393	434	383
MINING, QUARRYING, & OIL AND GAS EXTRACTION (21)	96	77	84	90	112	157	76	57	61	56	77 A/	
UTILITIES (22)	2,444	2,510	2,525	3,101	3,099	3,034	3,110	3,176	3,205	3,512	3,572	3,309
CONSTRUCTION (23)	18,558	19,063	19,192	23,042	26,903	29,278	30,496	29,573	28,720	29,380	29,617	30,943
MANUFACTURING (31-33)	52,024	50,700	49,208	53,193	59,719	60,122	58,878	59,346	59,963	63,227	66,092	74,079
FOOD	5,511	5,509	5,386	5,291	5,442	4,399	3,920	4,003	4,084	4,042	4,259	4,232
BEVERAGE & TOBACCO	126	115	109	95	112	120	130	106	103	89	79 A/	
TEXTILE MILLS	24	10	12	26	28	33	30	34	29	26	34 A/	
TEXTILE PRODUCT MILLS	210	224	193	202	235	191	161	148	111	158	174	217
APPAREL	95	64	57	92	115	64	80	79	74	69	77	82
LEATHER & ALLIED PRODUCTS	3	3	9	11	13	13	0	2	1	0	98 A/	
WOOD PRODUCTS	294	272	299	260	311	339	278	281	287	479	471	552
PAPER	2,423	2,440	2,457	2,441	2,721	2,798	2,866	2,701	2,669	2,871	2,645	2,987
PRINTING & RELATED SUPPORT	4,293	4,330	4,369	5,058	6,494	6,837	7,233	7,393	7,864	8,470	8,400	9,240
PETROLEUM & COAL PRODUCTS	33	30	32	23	92	73	59	82	130	145	168 A/	
CHEMICAL	2,761	2,750	2,745	2,832	3,054	2,951	3,176	2,928	2,845	2,374	2,154	2,646
PLASTICS & RUBBER PRODUCTS	4,174	4,117	3,864	4,162	4,614	4,637	4,613	5,091	5,248	5,208	5,094	5,701
NONMETALLIC MINERAL PRODUCTS	586	618	576	660	812	832	788	822	749	968	945	1,175
PRIMARY METAL PRODUCTS	576	608	547	650	756	985	993	1,177	1,191	1,224	1,181	1,381
FABRICATED METAL PRODUCTS	10,750	10,286	9,709	10,452	12,111	12,772	11,979	12,126	11,883	11,673	11,550	12,732
MACHINERY	6,357	5,913	5,914	6,494	7,286	7,602	7,586	7,234	7,275	7,713	8,145	9,390
COMPUTER & ELECTRONIC PDTS.	6,216	6,384	6,078	6,706	6,743	7,168	7,388	7,528	8,133	9,742	11,039	12,388
ELECTRICAL EQUIP., APPLIANCES, & COMP.	2,609	2,544	2,694	3,149	3,313	3,072	2,878	2,817	2,758	3,115	4,078	4,821
TRANSPORTATION EQUIPMENT	2,293	2,018	1,695	1,769	2,134	2,006	1,862	1,874	1,779	1,816	2,326	2,394
FURNITURE & RELATED PRODUCTS	652	673	661	847	1,070	1,113	985	943	924	1,148	1,267	1,449
MISCELLANEOUS MANUFACTURING	2,038	1,792	1,802	1,973	2,263	2,117	1,873	1,977	1,826	1,897	1,908	2,334
WHOLESALE TRADE (42)	47,015	45,609	44,552	47,984	50,669	50,083	52,027	50,599	49,830	50,509	52,526	55,114
RETAIL TRADE (44-45)	61,120	60,903	59,906	61,886	68,274	69,136	68,734	70,277	68,673	67,133	67,788	70,460
TRANSPORTATION & WAREHOUSING (48-49)	22,484	21,419	20,593	22,377	24,218	23,599	22,897	21,839	21,019	20,254	20,669	22,148
INFORMATION (51)	10,064	10,386	11,448	12,435	13,888	13,377	13,226	13,387	13,237	15,797	17,290	20,851
FINANCE & INSURANCE (52)	30,089	29,247	29,121	30,778	33,869	35,386	35,630	35,188	35,130	33,611	32,105	32,779
REAL ESTATE & RENTAL & LEASING (53)	8,131	8,118	8,118	8,798	9,620	10,645	10,304	9,477	9,256	9,125	8,928	10,103
PROFESSIONAL, SCIENTIFIC & TECH. SVCS. (54)	49,798	48,098	46,010	47,331	49,625	48,733	48,134	46,049	44,113	42,334	43,936	47,039
MNGMT. OF COMPANIES & ENTERPRISES (55)	24,306	21,274	19,544	18,438	18,609	17,828	15,892	14,938	15,086	15,066	13,563	12,214
ADMIN. & SUP. & WASTE MGMT. & REMED. SVCS. (56)	47,139	47,678	44,376	44,783	52,126	52,826	52,521	47,504	45,458	42,212	38,989	40,986
EDUCATIONAL SERVICES (61)	16,559	15,624	14,711	12,860	12,061	11,560	10,729	10,088	9,700	9,401	9,325	8,953
HEALTH CARE & SOCIAL ASSISTANCE (62)	56,903	55,629	53,938	51,314	49,664	47,744	45,623	43,755	43,248	42,108	41,467	40,258
ARTS, ENTERTAINMENT & RECREATION (71)	5,099	4,956	4,621	4,605	4,947	5,152	5,255	5,094	4,886	4,751	4,750	4,700
ACCOMMODATIONS & FOOD SERVICES (72)	39,323	38,619	37,974	38,967	39,455	39,036	39,114	38,356	38,556	36,908	37,636	36,853
OTHER SERVICES (except PUBLIC ADMIN.) (81)	18,012	19,542	18,216	19,083	19,900	19,975	20,054	20,027	20,884	20,509	20,311	20,730
UNCLASSIFIED (99)	382	433	493	503	685	602	673	746	1,095	978	666 A/	

Source: Illinois Department of Employment Securities, Where Workers Work
A/ FIGURES OMITTED TO AVOID DISCLOSURE OF INDIVIDUAL FIRM DATA.



Economic Development Alliance™

Economic Trend Analysis

City of Chicago and DuPage County - January 2013

Private Sector Employment City of Chicago

Private Sector Employment	2012	2011	2010	2009	2008	2007	2006	2005	2004	2003	2002	2001
Industry (NAICS)	City of Chicago											
ALL INDUSTRIES	1,071,227	1,034,196	1,011,151	1,042,013	1,096,131	1,094,718	1,089,347	1,065,215	1,061,748	1,076,483	1,101,827	1,141,970
AGRICULTURE, FORESTRY, FISHING, & HUNTING (11)	38	51	35	20	79	97	123	31	17	20	206	199
MINING, QUARRYING, & OIL AND GAS EXTRACTION (21)	195	184	216	241	259	307	354	375	372	418	366	316
UTILITIES (22)	3,272	3,107	3,002	3,442	3,496	3,364	3,429	3,522	3,652	3,713	5,178	5,816
CONSTRUCTION (23)	18,845	18,107	19,165	25,251	29,616	29,776	29,017	26,748	28,820	29,418	27,777	27,931
MANUFACTURING (31-33)	65,304	65,421	64,727	69,620	78,670	81,624	85,183	91,517	94,142	100,062	108,859	122,623
FOOD	16,506	16,923	17,101	17,924	19,047	19,838	19,450	19,796	20,344	22,016	22,865	23,807
BEVERAGE & TOBACCO	513	500	539	511	1,041	1,005	1,021	1,274	1,548	1,491	1,717	1,713
TEXTILE MILLS	223	259	243	408	458	478	487	468	474	556	653	837
TEXTILE PRODUCT MILLS	1,294	1,327	1,306	1,229	1,360	1,625	1,549	1,604	1,520	1,618	1,440	1,344
APPAREL	1,581	1,639	1,735	1,984	2,195	2,597	2,616	2,876	3,105	3,307	4,422	5,003
LEATHER & ALLIED PRODUCTS	342	335	321	342	423	498	588	728	795	744	1,221	1,590
WOOD PRODUCTS	389	423	458	537	585	661	688	749	700	745	811	960
PAPER	3,636	3,616	3,595	4,137	4,474	4,439	4,791	5,164	5,305	5,589	6,077	7,127
PRINTING & RELATED SUPPORT	3,457	3,644	3,834	4,600	5,408	5,659	5,812	5,877	6,028	6,875	7,274	8,557
PETROLEUM & COAL PRODUCTS	387	401	398	477	468	538	613	593	618	630	587	644
CHEMICAL	2,947	2,910	3,156	3,146	3,535	3,638	3,897	4,313	4,666	4,893	5,980	6,533
PLASTICS & RUBBER PRODUCTS	1,623	1,714	1,769	1,984	2,084	1,837	2,668	3,056	3,066	3,019	3,443	3,644
NONMETALLIC MINERAL PRODUCTS	1,022	997	958	1,183	1,465	1,551	1,472	1,567	1,618	1,661	1,774	2,347
PRIMARY METAL PRODUCTS	1,860	1,758	1,808	1,915	2,194	2,290	2,394	2,403	2,479	2,631	3,000	4,094
FABRICATED METAL PRODUCTS	9,520	9,689	9,207	10,546	12,396	12,842	14,656	15,635	16,474	17,678	18,633	21,799
MACHINERY	2,578	2,625	2,575	2,721	2,541	2,842	3,153	3,294	3,091	3,392	3,805	4,757
COMPUTER & ELECTRONIC PDTS.	1,558	1,481	1,488	1,689	1,915	2,081	2,030	2,075	2,321	2,622	3,076	3,581
ELECTRICAL EQUIP., APPLIANCES, & COMP.	3,636	3,515	3,555	3,612	4,078	4,052	4,035	4,327	4,827	5,480	6,151	7,071
TRANSPORTATION EQUIPMENT	5,392	4,634	3,584	3,024	4,621	4,721	4,443	6,133	5,503	5,475	6,005	6,056
FURNITURE & RELATED PRODUCTS	3,018	3,127	3,226	3,310	3,933	3,978	4,283	4,872	4,909	4,931	5,037	5,842
MISCELLANEOUS MANUFACTURING	3,822	3,904	3,871	4,341	4,449	4,454	4,537	4,713	4,751	4,709	4,888	5,317
WHOLESALE TRADE (42)	35,229	34,553	33,906	36,107	39,120	40,011	40,199	40,204	40,032	40,735	42,377	46,143
RETAIL TRADE (44-45)	89,350	87,659	85,958	87,588	91,822	90,561	88,771	86,969	83,292	84,940	87,754	90,156
TRANSPORTATION & WAREHOUSING (48-49)	58,926	56,944	55,852	56,244	61,168	63,421	65,161	66,663	66,946	67,283	69,147	75,595
INFORMATION (51)	35,344	32,749	31,714	32,780	35,625	36,217	36,302	37,171	38,393	40,224	43,661	45,713
FINANCE & INSURANCE (52)	103,843	104,117	106,072	109,212	115,536	118,652	121,724	121,128	121,943	123,171	124,317	125,642
REAL ESTATE & RENTAL & LEASING (53)	25,035	24,604	25,150	26,483	28,245	29,683	29,579	29,491	29,895	29,559	30,350	30,413
PROFESSIONAL, SCIENTIFIC & TECH. SVCS. (54)	133,890	128,933	126,250	131,240	137,670	132,840	129,580	122,792	118,075	124,213	131,967	137,426
MNGMT. OF COMPANIES & ENTERPRISES (55)	14,129	14,236	15,307	15,697	15,799	16,227	15,853	15,912	15,116	15,134	14,102	12,885
ADMIN. & SUP. & WASTE MGMT. & REMED. SVCS. (56)	90,247	86,039	80,591	77,870	90,799	90,866	90,779	84,148	82,823	83,658	83,891	92,867
EDUCATIONAL SERVICES (61)	58,911	57,842	52,578	51,664	48,730	46,899	45,213	43,002	42,309	41,029	43,032	40,009
HEALTH CARE & SOCIAL ASSISTANCE (62)	157,635	145,889	141,478	147,095	141,926	139,922	137,586	134,441	132,577	132,746	130,592	126,500
ARTS, ENTERTAINMENT & RECREATION (71)	16,775	16,529	17,194	17,139	17,215	16,633	16,624	15,290	16,093	16,189	16,071	15,720
ACCOMMODATIONS & FOOD SERVICES (72)	107,183	101,635	96,704	98,132	104,776	102,389	98,939	92,523	91,787	88,260	86,235	89,669
OTHER SERVICES (except PUBLIC ADMIN.) (81)	55,452	53,508	52,701	53,764	53,556	53,057	51,934	51,204	52,171	52,393	53,390	53,938
UNCLASSIFIED (99)	1,624	2,089	2,551	2,424	2,024	2,172	2,997	2,084	3,293	3,318	2,555	2,409

Source: Illinois Department of Employment Securities, Where Workers Work
A/ FIGURES OMITTED TO AVOID DISCLOSURE OF INDIVIDUAL FIRM DATA.

Wage Comparison Cook County and DuPage County

Wage Rates - Cook County

Occupation	Entry Level	Experienced Level
Accountant / Auditor	\$22.33	\$32.74
Assembler - Electronics	\$10.33	\$13.11
Assembler - Production	\$9.22	\$12.34
Computer Operator	\$14.29	\$19.40
Drill or Punch Press	\$12.30	\$16.16
Engineer	\$17.39	\$28.04
Healthcare Practitioners and Tech	\$18.63	\$31.25
Information Technology Manager	\$34.97	\$52.55
Information Technology Specialist	\$25.04	\$37.38
Janitor	\$9.14	\$11.52
Laborer	\$9.00	\$11.07
Machinist	\$13.11	\$19.77
Maintenance Mechanic	\$12.02	\$18.44
Office Clerk	\$10.34	\$14.27
Secretary	\$11.17	\$16.36
Sheet Metal Worker	\$14.59	\$33.67
Ship-Receiving Clerk	\$10.25	\$14.08
Systems Analyst	\$22.01	\$31.56
Technician	\$14.76	\$22.64
Tool & Die Maker	\$16.07	\$25.33
Transportation, Distribution Manager	\$23.03	\$34.22
Truck Drivers	\$15.78	\$23.36
Welder	\$13.17	\$18.02

Source: Illinois Department of Employment Securities

Wage Rates - DuPage County

Occupation	Entry Level	Experienced Level
Accountant / Auditor	\$20.43	\$40.90
Assembler - Electronics	\$10.41	\$20.04
Assembler - Production	\$9.21	\$15.73
Computer Operator	\$12.71	\$29.81
Drill or Punch Press	\$9.61	\$15.39
Engineer	\$17.77	\$29.63
Healthcare Practitioners and Tech	\$16.96	\$45.19
Information Technology Manager	\$37.03	\$66.97
Information Technology Specialist	\$27.82	\$49.08
Janitor	\$9.08	\$13.90
Laborer	\$9.29	\$14.24
Machinist	\$13.65	\$23.28
Maintenance Mechanic	\$11.59	\$24.65
Office Clerk	\$10.01	\$17.28
Secretary	\$11.24	\$19.00
Sheet Metal Worker	\$14.59	\$33.67
Ship-Receiving Clerk	\$10.24	\$16.89
Systems Analyst	\$24.39	\$40.56
Technician	\$13.08	\$30.00
Tool & Die Maker	\$20.08	\$30.24
Transportation, Distribution Manager	\$25.53	\$44.51
Truck Drivers	\$14.06	\$23.97
Welder	\$13.02	\$22.80

Source: Illinois Department of Employment Securities

Summary

- DuPage County wages are higher in all categories.



Economic Development Alliance™

Economic Trend Analysis

City of Chicago and DuPage County - January 2013

Contact Us

Greg Bedalov, President and CEO

Choose DuPage

2525 Cabot Drive

Lisle, IL 60532

630-955-2089

gbedalov@choosedupage.com